



# Supported Child Development

Program Handbook



thriving. connected. happy.

Revised April 2026



## Welcome to Aspire Richmond!

---

Aspire is a community living organization. We serve and support people with developmental disabilities and their families. We are here to share some of your journey as you grow, learn, struggle, and laugh together with family and friends.

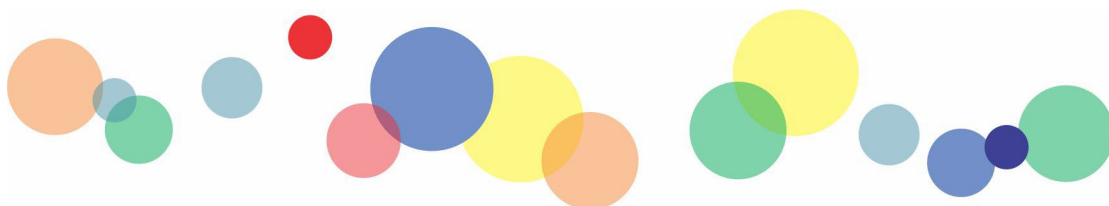
You will meet many others on your journey: friends, staff, volunteers, and other families. We hope you will take part in the community network that is Aspire.

This handbook will help you understand:

- Who we are and how we started
- What we do and what we believe
- Our policies on privacy, rights, advocacy, health and safety, and service quality
- What to expect from our programs (part 2)

We believe that having the right information helps you make good choices.

Please take time to read this handbook and keep it nearby—you might want to refer to it later.



Contents

---

**Welcome to Aspire Richmond! .....3**

**Who We Are.....6**

    Our Vision, Mission and Values ..... 6

    Our Philosophical Approach ..... 8

    How We Began..... 10

    Our Board of Directors..... 10

    Our Staff and Volunteers ..... 11

**What We Do.....12**

    Community Inclusion ..... 12

    Advocacy..... 12

    Supporting Self-Advocacy ..... 13

    Planning ..... 14

    Programs, Supports and Services ..... 17

**Rights, Risks, and Responsibilities.....18**

    Rights ..... 18

    Risks and Responsibilities ..... 21

    Supporting People Who Communicate Using Behaviours ..... 22

**Service Quality .....23**

    Listening to You..... 23

    Focusing on Results ..... 23

    Meeting Standards and Regulations..... 24

**Privacy and Confidentiality .....25**

    Collecting Personal Information and Keeping it Safe and Accurate ..... 25

    Consent ..... 26

**Health, Safety and Well-being .....27**

    Emergency Preparedness ..... 27

    Medication Safety ..... 27

    Standard Precautions..... 27

First Aid .....	27
External Monitoring.....	28
Planning for Safety .....	28
Reporting Abuse .....	28
<b>Your Relationship with Aspire .....</b>	<b>29</b>
Getting Involved.....	29
On-going Communication.....	30
Expectations.....	30
Problem Solving and Complaints.....	31
<b>Resources .....</b>	<b>33</b>
<b>The Supported Child Development Program .....</b>	<b>35</b>
What is the Supported Child Development Program? .....	35
Access to SCDP Services.....	36
Waitlist Management .....	38
Types of Services.....	39
The SCDP Approach and Philosophy .....	40
SCDP Consultants.....	42
What to Expect from SCDP .....	42
The Role of the Parent .....	48
Transportation .....	49
Your Child’s Record .....	49
Communication and Staying Connected .....	50
Leaving Supported Child Development.....	50
<b>NOTES.....</b>	<b>53</b>

# Who We Are

---

Aspire is a non-profit organization that follows the rules of the B.C. Societies Act. We offer programs and services in the community for people of all ages with different abilities, and for their families.

The people we support are of all ages and have a wide range of abilities and circumstances. Some people live at home with their families and some live in homes supported or operated by Aspire. Some people have serious health care needs or other challenges as well.

We believe everyone has a right to be part of their community, feel valued, and be accepted for who they are. If families are well supported, then people within those families will be too.

We offer many kinds of help and resources to meet the needs of each person and family.

Aspire is made up of the people we support, their families, and others who believe in building an inclusive community. We follow a Constitution and By-laws that explain how we run things—like choosing our Board of Directors, holding annual meetings, and reporting on our finances.

Most of our funding comes from the provincial government. We also receive money from program fees, donations, and fundraising. Government ministries help decide who qualifies for services and, in some cases, they manage the waitlists. We'll talk with you during the intake process about how long you might need to wait for support.

## Our Vision, Mission and Values

Our Mission, Vision and Values guide our programs, activities, and decisions. They remind us, every day, of why we do what we do.

**Our Vision:** Thriving, connected, happy lives.

**Our Mission:** From infancy through adulthood, we support people with developmental disabilities to define, discover and advocate for their self-determined goals, passions and happiness.



We do this by:

- Amplifying the voices, needs and desires of the people and families we support.
- Treating all people with kindness, dignity and respect.
- Providing flexible programming and services that respond to the changing needs of individuals and families.
- Building the most inclusive, equitable, safe and diverse organization possible.
- Creating accessible conversations, events and spaces to inspire, educate and bring communities together.

Our Service Values are:



#### RIGHTS

supporting the rights of people with disabilities to full and equal citizenship



#### FAMILY-CENTRED

strengthening the importance of the family role



#### PERSON-CENTRED

recognizing the diversity of each person with unique plans and personal support



#### INCLUSION

supporting people to belong in all parts of community, including social, financial, spiritual life, and more



#### CHOICE

learning people's preferences, hopes and dreams, interests and decisions that define their life in small and big ways.



#### MEANINGFUL RELATIONSHIPS

helping to grow the number of family members, friends and others in a person's life



#### GROWTH & DEVELOPMENT

supporting the ongoing development of skills, abilities, and talents of each person



#### ADVOCACY

protecting the rights and interests of people and families



#### COMMITMENT TO COMMUNITY

working with communities to welcome and include all people



#### LIFE LONG SUPPORTS

assisting people and families through the natural lifecycle

## Our Organizational Values are:



**MUTUAL TRUST**  
be sure of the reliability  
of people and systems



**RESPECT**  
the value and dignity of all is upheld  
by listening to and recognizing each  
other's contribution and opinions



**OPENNESS**  
freedom to share opinions and  
ideas without fear of punishment



**RESPONSIVENESS**  
planning for different  
situations and outcomes



**FAIRNESS**  
people are treated equitably



**CONTINUOUS LEARNING**  
offering ways to improve  
one's own work and the  
work of the team

We want to support you and your family to live the life you want – to fully take part in our programs and in the Richmond community.

## Our Philosophical Approach

### Person and Family Centred Practice

Your Life, Your Choices - At Aspire, our staff, caregivers, and volunteers are here to help and support you—but we know this is your life. Everything we do is respectful of the rights of individuals we serve. We support families to make your own decisions and choices, even when that means taking risks, changing your mind, or making mistakes. We are here to walk beside you, not to take over. Think of us as your partners, helpers, and guides—ready to support you in the way that works best for you.

### Planning

We help create personal plans for the people we support. These plans might include:

- A care plan to guide staff or caregivers in how to best support you or your family member
- A person-centered plan that focuses on your goals, dreams, and what's important to you

We believe planning works best when you and your family are involved. Your ideas, choices, and goals are at the heart of the process, and we're here to support you every step of the way.

## Supporting Families

We know that when we support someone, we're also supporting their family. Families often know their loved ones best.

Families can include:

- Immediate family
- Extended family
- Close friends and support networks

Families may need different kinds of help at different times in life. We're here to provide support, share helpful information, and connect you with other families.

If we can't offer the support you need, we'll help you find another organization that can.

## Celebrating Diversity

Richmond is a diverse community, with people from many different cultures, backgrounds, and life experiences. At Aspire, we celebrate and value this diversity.

We welcome people of all:

- Cultures, races, and religions
- Ethnic backgrounds and places of origin
- Abilities—both physical and intellectual
- Sexual orientations and gender identities
- Economic, social, and personal experiences

Here's how we support diversity and inclusion:

- We listen to many voices when making decisions
- We hire staff who reflect our diverse community
- We train our team to provide respectful, culturally aware services
- We translate some materials into different languages
- We work to keep our organization free from discrimination and harassment

- We make sure everyone has fair access to our services

Everyone deserves to feel welcome, respected, and included—and we're committed to making that happen.

## How We Began

Aspire began like many community living organizations in B.C.—with parents who wanted better services for their children with developmental disabilities, close to home.

In the early 1980s, a group of parents in Richmond came together to form the Richmond Society for Special People. Their first program was after-school care for children and youth with special needs.

Over time, we grew and added more services. In 1988, we joined the BC Association for Community Living (now called Inclusion BC) to connect with other organizations across the province.

Since then, many important changes have shaped who we are:

- Large institutions for people with developmental disabilities were closed in B.C.
- New community-based options were created to support people in their own communities
- Services became more personalized, offering more choice and flexibility

Offering supports for people in their home community is still important to Aspire today. We continue to grow, listen to families, and build high-quality services using the best available knowledge and practices.

## Our Board of Directors

Aspire is guided by a volunteer Board of Directors. The Board is elected by our members each year at the Annual General Meeting (AGM) and includes family members of those we support, self-advocates and other community members.

The Board's role is to:

- Protect and promote Aspire's vision, mission, and values
- Provide leadership and direction for our programs and services
- Make sure Aspire is doing its best for the people and families we support

To help with its work, the Board has special committees, including:

- The Executive Committee
- The Finance Committee
- The Inclusive Education Committee

## Our Staff and Volunteers

Aspire’s Board of Directors gives overall direction, but the day-to-day work is managed by our Chief Executive Officer (CEO).

The CEO is responsible for:

- Hiring staff
- Managing the budget
- Running programs
- Building relationships with families, staff, funders, and others
- Creating policies for daily operations
- Reporting to the Board

Our staff report to the CEO and are the people you’ll see most often in our programs. Many of them are part of the Canadian Union of Public Employees (CUPE). They are supported by our volunteers, and in some programs, by contracted caregivers.

Everyone—staff, volunteers, and caregivers—follows a Code of Ethics. This means you can expect to be treated with respect, dignity, courtesy, and fairness. And you can trust that our policies and expectations are followed.

An Organization Chart of Aspire’s leadership and staff is available at [www.aspirerichmond.com](http://www.aspirerichmond.com).



[Resources  
on the  
Aspire  
Richmond  
website](#)

# What We Do

---

## Community Inclusion

At Aspire, we believe that everyone has the right to be part of their community—to participate, contribute, and feel like they belong. Helping people be included in their community is one of our main goals. We support individuals and their families or support networks to make this happen.

In all our programs, we:

- Focus on community inclusion
- Use person-centered planning to set goals based on each person’s interests
- Create activities that are meaningful and tailored to each individual
- Help people find ways to get involved, make friends, and give back to their community

Our staff and contractors plan activities that meet people’s interests. We want everyone to take part in community life.

## Advocacy

Advocacy means standing up for your rights and helping you get the support you need. We believe that everyone deserves a good life and a chance to be fully part of their community—and we’re here to help make that happen.

Advocacy can include:

- Going with you to meetings (like at schools or other agencies)
- Helping you understand and access community services (like health care)
- Supporting you in finding resources or talking to decision-makers
- Working with you to improve services and create positive change

We also help you and your family build your own advocacy skills, so you can speak up for yourself and support others.



Aspire promotes public education and awareness, including events during Community Living Month in October. These activities help families and the community learn more and become stronger, more confident advocates.

On a larger scale, Inclusion BC supports individuals, families, and organizations like Aspire. They help with:

- Advocacy and networking
- Conferences and training
- Sharing information and resources
- Public awareness and lobbying for change

Advocacy is one of the most important things we do—and we're proud to stand with you.

## Supporting Self-Advocacy

Self-advocacy means standing up for yourself and your rights. The self-advocacy movement is happening around the world – people with developmental disabilities are speaking up. People are taking leadership as self-advocates on issues that matter to them. Leaders in the movement talk about self-determination. This is the right to control your own life and make your own decisions.

Self-advocates have helped bring big changes in B.C., like:

- Moving from institutions to community living
- Changing how we talk about and describe people with disabilities
- Creating easy-to-understand information
- Helping shape the kinds of supports and services available

There are self-advocacy groups across B.C., including one here at Aspire! These groups:

- Share ideas and support
- Organize training and speaking events
- Work together to create change
- Have fun and make new friends

We encourage youth and adults with developmental disabilities to join our self-advocacy group and be part of the movement.

Aspire also supports families in helping their loved ones build self-advocacy skills.

We promote public education and awareness, including events during Community Living Month in October. These activities help everyone learn more and become stronger advocates.

At the provincial level, Inclusion BC supports advocacy for individuals, families, and organizations like Aspire. They offer:

- Conferences and training
- Information and resources
- Support for self-advocacy groups
- Public awareness and lobbying efforts

## Planning

Everyone is unique. We all grow and learn at our own pace, with different strengths, needs, and dreams. Families are unique too—with their own cultures, values, and experiences.

At Aspire, we use Person-Centred Planning to support individuals and families. This means:

- We focus on your strengths, interests, and goals
- We work with you and your support team to create a plan that fits your life
- We celebrate who you are and help build a vision for your future

Depending on your needs, you may have more than one type of plan. Together, these make up your service plan—and no two plans are exactly the same.

Some plan types include:

### Person-Centred Plan

A Person-Centred Plan is a personalized document created with your input—and, when possible, with help from your family and support network. It's designed to reflect your needs, preferences, and dreams, and guide the services and supports we provide.

Your plan helps you:

- Set goals for your future
- Explore your interests
- Create a clear path to reach those goals

Before we create your plan, we take time to get to know you—this is called the discovery process. We encourage families, friends, and professionals to be part of the planning. We'll help make sure everyone can participate in a way that works for you.

A Person-Centred Plan is created within 3 to 6 months of starting services at Aspire and it is reviewed and updated at least once a year. We keep a copy of your Person-Centred Plan and, with your permission, share it with others who helped create it.

Person-Centred Plans follow a variety of formats, depending on what Aspire services you participate in:

- The F-Words Framework is used in Children Services
- PATH is used in Adult Services and for youth transitioning to Adult Services
- Lifestyle/Gateway Planning is used in Adult Services
- Vocational Plan is used in Employment Services

All of these plans lead to an action plan, or what we call measurable goals to help you live the life you want. These goals may be related to:

- Reaching developmental milestones
- Recreation and hobbies
- Education and learning
- Relationships and social life
- Work or volunteering
- Home and living arrangements

## Care Plan

A Care Plan is a document that explains the help and support a person needs in their daily life. It's made just for you and includes important details like:

- Emergency contact information
- Your daily routines and personal preferences
- Support for daily activities (like eating, bathing, dressing)
- Help with getting around in the community
- Any behavioral supports you may need

The Care Plan helps our staff understand how to support you in the best way, every day. It is made before you start receiving services at Aspire and it is reviewed and updated at least once a year, or sooner if your needs change.

## Health Care Plan(s)

Some individuals may need extra help with their health. A Health Care Plan is created for each serious or complex medical need. Medical Professionals are involved in creating Health Care Plans and they may include:

- Medical procedures
- Training for staff or caregivers
- Emergency instructions
- Details about the person's health needs and supports

Examples of Health Care Plans are:

- Nutrition Plans
- Guidelines for Medications
- Seizure Plan
- Allergy Plan
- Asthma Plan
- Bowel/Bladder Plan
- Or other Plans related to acute or chronic conditions

Health Care Plans must be ready before services begin at Aspire. They are reviewed and updated every year, or sooner if the person's health changes. They help keep individuals safe and ensures they get the care they need every day.

## Other Reports or Plans from Professionals

Depending on an individual's needs, they may have other plans developed by professionals. These may include Communication Plans, Behaviour Support Plans and Safety Plans.

# Programs, Supports and Services

We support individuals with developmental disabilities of all ages and at many life stages. Here's a quick overview.

## Services for Children, Youth and Families

- **Infant Development (IDP)** provides consultants who work with families. Giving resources, referrals, and support for children up to age three who have developmental delays or risk factors for later diagnosis.
- **Supported Child Development (SCDP)** is a community based early intervention program for families and child care centres. Giving practical information, resources, and strategies for the inclusion of children with disabilities in child care settings. SCDP consultants assist families to access child care in their community.
- **Child Care Programs (Seedlings and Treehouse)** are for children from birth to grade 7. Staff support developmental and personal growth in children to increase skills and independence. Staff support children needing additional support and typically developing children with age-appropriate activities.
- **Youth Connections** is an after-school program for youth with disabilities to attend recreational and social activities.
- **Family Respite** is support for parents with the daily responsibilities of caring for children or adults who have a developmental disability.

## Services for Adults

- **LIFE - Learn, Involve, Focus, Employ** - are supports and services for people to achieve their individual goals. Supports are provided in the community and at Aspire program locations. LIFE services include an Employment program for people who wish to seek employment.
- **Housing Options** include 3 different models of support
  - **Supported Living** is 24-hour staffed support for people who live in their own home with others.
  - **Independent Living** supports individuals to live independently with identified needed supports to ensure life-long success.
  - **Home Share** is community caregivers sharing their home and life with an individual who has a developmental disability. Matches are based on people feeling as they are valued member of a family.
- **Family Resources** provides information, resources, or support to family members who face the needs that come with having a family member with a disability.

# Rights, Risks, and Responsibilities

---

## Rights

People using our services enjoy the same rights as all Canadian citizens. These rights are set out in the *Canadian Charter of Rights and Freedoms*, and the *BC Human Rights Code*.

In 2010, Canada ratified the *UN Convention on the Rights of Persons with Disabilities*. Ratifying the Convention means we agreed to follow what it says. It is about human rights and changing attitudes towards persons with disabilities. Everyone has the right to make decisions for their lives based on their free and informed consent. Everyone has the right to be an active member of society.

The basic ideas of the convention are that:

- People are free to make their own choices.
- No one will be discriminated against.
- Disabled people have the same rights to be included in society as anybody else.
- Disabled people are to be respected for who they are.
- Everyone should have equal opportunities.
- Everyone should have equal access.
- Men and women should have equal opportunities.
- Disabled children should be respected for who they are as they grow up.

At Aspire, we believe in these rights and work hard to make sure they are respected. Together with our Self-Advocacy group, Aspire created our own Rights Statements. These are reviewed every year with you and/or your family to make sure you understand your rights and feel supported.

These statements below are available at [www.aspirerichmond.com](http://www.aspirerichmond.com).

## Children Rights Statement:

# I have the right ...



### TO BE SAFE

to be healthy  
to kindness and peace  
to be helped and informed  
to feel safe and be protected from harm and danger



### TO BE ME

to have choice  
to learn and make mistakes  
to understand and be accepted  
to say what I think and feel



### TO BE IMPORTANT

to love and be loved  
to be heard and understood  
to be valued and honoured  
to be cared for with dignity and respect  
to be as independent as I can



### TO PLAY

to have friends  
to use my imagination  
to learn new skills  
to belong and be included in community



thriving. connected. happy.

## Adult Right Statement:

### RIGHTS ARE RULES THAT MAKE PEOPLE EQUAL.

I have the right to be viewed as a person first.  
I have the right to feel safe wherever I go.  
I have the right to be heard and understood in my own way.  
I have the right to be asked about the help I need or want.  
I have the right to share how I feel and think.  
I have the right to receive information in plain language.  
I have the right to be spoken to directly in a way that shows respect.  
I have the right to make decisions about my life.  
I have the right to decide what information is public or private.  
I have the right to make mistakes and learn from them.  
I have the right to good healthcare.  
I have the right to have relationships.  
I have the right to access skilled supports in the community.  
I have the right to vote.  
I have the right to receive legal support if I need it.  
I have the right to have my ideas supported and valued.  
I have the right to give feedback about Aspire Services.



### A RESPONSIBILITY IS SOMETHING I AM EXPECTED TO DO.

I have a responsibility to care for myself.  
I have a responsibility to care for others.  
I have a responsibility to ask for help when I need it.  
I have a responsibility to follow the law.



thriving. connected. happy.

## Risks and Responsibilities

Having rights also means having responsibilities. At Aspire, we ask individuals and families who use our services to:

- Respect the rights of others
- Follow our policies
- Take part in planning
- Make choices and decisions about their own lives

We're always here to offer support and guidance. We know families and support networks play a big role in helping individuals grow and make decisions.

Making choices sometimes involves taking risks—and that's okay. Everyone is different, and each person or family may find their own balance between safety and independence. We believe it's important for people to:

- Think for themselves
- Make their own decisions
- Learn from mistakes
- Ask for help
- Change their minds
- Try new things

Sometimes, individuals may make choices that are different from what their families would choose. When this happens, we listen to everyone's views and work together to find the best solution. We are committed to:

- Keeping individuals safe while they use our services
- Respecting family values and customs as much as possible
- Working with families to plan for and respond to situations that may involve risk

Aspire has processes in place to support individuals and families when facing challenges or behaviours that may involve risk.

# Supporting People Who Communicate Using Behaviours

Sometimes, people show behaviours that are hard to understand or respond to. At Aspire, we believe these behaviours are a form of communication, and we respond with respect, care, and understanding.

Our staff and caregivers are trained to use Positive Behaviour Support (PBS). PBS is a proven approach that helps us:

- Understand why a behaviour is happening
- Find ways to prevent challenging behaviours
- Teach new skills to help individuals express themselves
- Support people in a way that respects their rights, safety, dignity, and independence

The PBS Process includes:

- Assessing the need for a Behaviour Support Plan
- Building a Behaviour Support Team: We bring together the people who know the individual best—family, friends, caregivers, therapists, and staff.
- Person-Centred Planning: The team listens to the individual’s goals and dreams to help guide the support plan.
- Functional Behavioural Assessment (FBA): We collect information to understand what triggers the behaviour and why it happens.
- Behaviour Support Plan Development: Based on the FBA, we work with psychologists or behavioural consultants to get a Behaviour Support Plan in place to help everyone stay safe and supported. The plan may include:
  - Strategies to teach new skills
  - Safe and respectful ways to respond
  - Goals for improving the person’s quality of life
  - Safety Plan or De-escalation Plan
- Approval of the Behaviour Support Plan includes the individual, their family or legal representative, the Aspire Program Manager and Director.
- Monitoring Progress: We track changes in behaviour and progress toward goals. Plans are reviewed every year, or sooner if needed.

# Service Quality

At Aspire, we're always working to get better at what we do. We call this Continuous Quality Improvement—it means we listen, learn, and make changes to improve our services. Here are some of the ways we monitor our work:



## Listening to You

You and your family know best how our services are working. We value your suggestions and take your feedback in many ways:

- We have an open-door policy. This means we welcome you to let us know when something isn't working.
- We send you surveys on a regular basis so we can make our programs better as a result of your feedback. This includes sending a survey to you after leaving Aspire, so we can check in and offer help if needed.
- We interview the people we support about how they feel about our services.

If you have any concerns, please tell us. We promise to listen and do our best to help.

## Focusing on Results

We want to know if our programs are making a difference. Each program has goals, and we measure how well we're doing in four areas:

- Effectiveness – Are we achieving the results we planned?
- Efficiency – Are we using our resources wisely?
- Service Accessibility – Is it easy for people to get the help they need?
- Experience of Service – Are people happy with our services?

We share our progress in an Annual Outcomes Management Report, available on our website: [www.aspirerichmond.com](http://www.aspirerichmond.com). We also summarize the results from the perspective of Quality of Life; this is called the Quality-of-Life Report Card.

# Meeting Standards and Regulations

Aspire follows rules and guidelines from:

- Government ministries
- Licensing bodies
- WorkSafe BC
- Accrediting organizations

We must follow these rules and guidelines in order to receive funding from the government. Aspire goes through a formal review, called Accreditation, that checks we meet high standards in areas like:

- Health and safety
- Individual planning and support
- Community inclusion
- Accessibility
- Financial responsibility
- Quality of services

Aspire was first accredited by CARF (Commission on Accreditation of Rehabilitation Facilities) in 2005, receiving the highest level: 3-year accreditation. We've continued to earn this top rating ever since.

We also have a strong internal structure to keep things running smoothly:

- Staff report to Program Managers
- Managers report to Directors and the Chief Executive Officer (CEO)
- The CEO reports to the Board of Directors
- We have a Director of Quality Assurance to oversee service quality
- We follow written policies and respond to feedback and complaints

# Privacy and Confidentiality

---

At Aspire, we take your privacy seriously. We follow provincial laws to keep your personal and family information safe and confidential.

Confidential information is anything personal or sensitive, such as:

- Medical, educational, financial, or psychological details
- Names, meeting notes, emails, reports, videos, or photos

We keep this information secure and up to date.



## Collecting Personal Information and Keeping it Safe and Accurate

When we receive a referral for services, we ask for some basic information. Once your application is accepted and we begin planning services, we may ask for more detailed information, such as:

- Medical and psychological reports
- Educational assessments
- Information from therapists or other professionals

We use this information to understand your family member's needs and strengths, so we can provide the best possible support.

We do not share your information with anyone outside Aspire without your permission. Sometimes, we are required to share certain information with government agencies that fund and oversee our services, like Community Living BC (CLBC) or the Ministry of Children and Family Development (MCFD). However, we only share what is required by law. If you have questions about how your information is used, please contact Aspire's Director of Quality Assurance.

You may ask to see the information we have on file at any time. It is important to keep your information current; we do our best to include you when we review the information we have on file. This gives you the opportunity to provide updates if anything changes or correct anything that is not accurate so we can adjust our services to meet your changing needs. Please be sure to give us copies of new reports or information that may impact the services you receive.

## Consent

At Aspire, we respect your right to make decisions. That's why we ask for your consent for many things, including:

- Consent to provide service.
- Consent to share information.
- Consent for program field trips (for child care).
- Consent to photograph or video (depending on the program).
- Consent for Communication and Information Technologies.
- Consent for Safe Release (for Out of School Care)

We will always explain what we're asking and why. You can say yes or no. You or your family member can withdraw consent at any time. Just let us know, and we'll explain what that means. In some cases, withdrawing consent may affect the services we can provide, but we'll talk with you about it.

As part of making decisions for themselves, we support adults to give their own consent. Under B.C. law, adults are assumed to be able to make decisions unless proven otherwise. How someone communicates does not affect their right to make choices.

Some adults may have a Legal Representative, Guardian, or Committee who helps make decisions. If you're unsure about this, talk to your Program Manager.

We make sure our staff and caregivers understand each person's legal status and respect their rights when it comes to decision-making and consent.

# Health, Safety and Well-being

---



At Aspire, your health, safety, and well-being are very important to us. Everyone has the right to a safe and supportive environment—physically, emotionally, and mentally. Here are some of the ways we make sure that happens:

## Emergency Preparedness

Every program responds to emergencies, such as a fire or earthquake, in ways that meet the needs of the individuals being supported.

## Medication Safety

We make sure the staff and caregivers who give medications are trained. Medications that go with an individual to their program must follow safety protocols. The Program Manager will share these protocols, when needed.

## Standard Precautions

Staff, volunteers, and caregivers are trained to protect themselves and others from risks related to blood and bodily fluids. We work with families to reduce these risks.

## First Aid

All staff and contracted caregivers are trained in First Aid.

## External Monitoring

We are regularly inspected by:

- The local Fire Department
- Building inspectors
- Community Care Facilities Licensing (for licensed programs)

We also report to WorkSafe BC and to provincial government ministries for following provincial health and safety rules.

## Planning for Safety

We work with individuals and families to plan for health or safety risks and come up with ways to address them. We update and revise plans as individuals' situations and needs change over time. We make sure all staff and contractors know about changes so they can respond.

## Reporting Abuse

If we suspect a child or youth under 19 is being abused or neglected, we are legally required to report it. If we suspect an adult is being abused or neglected, there is not a legal duty to report, but we believe it is our moral responsibility to report it.

We have many policies and procedures in place to follow in the event a report is needed. If this happens, we take direction from:

- Ministry of Children and Family Development (MCFD)
- Community Living British Columbia (CLBC)
- Community Care Facilities Licensing (Child Care or Supported Living, where applicable)
- Police

We also use the following resources:

- BC Handbook for Action on Child Abuse and Neglect for Service Providers
- Adult Guardianship and CLBC information on the CLBC Website
- Community Care Facilities Licensing: Child Care or Residential Care

# Your Relationship with Aspire

---

Just like any community, people have different roles. Things work best when everyone helps out in ways that feel right for them.

Most of our programs are funded by the government, but we wouldn't be able to offer the same level of service—or many of the extra supports—without help from volunteers, community support, and fundraising.

Each year, we host fundraising events and also receive support from others who organize their own events to help us.

## Getting Involved

There are many ways you can be part of our community—if you'd like to!

- **Become a member of Aspire** – Membership is low-cost and gives you a voice at our Annual General Meeting (AGM), where you can vote for board members and help shape our future. Visit our website at [www.aspirerichmond.com](http://www.aspirerichmond.com) for the membership application.
- **Volunteer in our programs** – Help out with open houses, picnics, training sessions, meetings, and more. Talk to your Program Manager to learn how.
- **Donate or help fundraise** – You can make a tax-deductible donation, choose where your gift goes, or donate equipment or services. Visit our website at [www.aspirerichmond.com](http://www.aspirerichmond.com) for ways you can give.
- **Join our Board of Directors** – Help lead and guide our organization. Talk to your Program Manager if you are interested.
- **Attend Aspire Events** – we host special events throughout the year where families, individuals we support, staff, and volunteers can connect in a relaxed and friendly setting. Attending these events provides opportunities to connect with other families.

Some of these activities take a bit of time and effort, but they come with great rewards. You'll meet other families, build a support network, learn new skills, and share your



own experiences. You'll also help strengthen community inclusion and support the services your family member relies on.

We hope you'll get involved in whatever way works best for you!

## On-going Communication

Just like any strong community, good communication helps everything run smoothly. When people stay connected, they know what's going on, feel heard, and know what to do if they have questions or concerns.

We know life can get busy, and things can change quickly. That's why we make a real effort to keep in touch with you.

We're committed to keeping families informed. Here's how we share updates:

- **Website** – Visit [www.aspirerichmond.com](http://www.aspirerichmond.com) for news and information.
- **Newsletter** – We send out regular updates with stories, events, and more.
- **Social Media** – Follow us to stay connected.
- **Email Updates** – You may receive occasional messages with important news.

We share updates about our programs, training opportunities, upcoming events, and activities. You'll also hear stories from the people we support, families, staff, and community partners.

As technology changes, we'll keep exploring new ways to stay in touch—and we'd love to hear your ideas and feedback too!

## Expectations

Good relationships work best when everyone knows what to expect.

As a family member, here's what you can expect from our staff, caregivers, and volunteers:

- You and your family will be treated with respect, dignity, fairness, and courtesy.
- We will follow our mission, values, and Code of Ethics.
- We'll provide planning and support that fits your needs.
- We'll communicate openly and regularly with you.

- Our team will keep learning and improving through training and professional development.
- We'll meet or exceed government and accreditation standards and always work to improve our services.

Here's what we ask from you:

- Share with us the information we need to support your family member well.
- Follow the program policies.
- Treat staff, other families, and individuals with respect, dignity, fairness, and courtesy.
- Take part in orientation and training, if appropriate, to help staff and caregivers understand your family member's needs.
- Communicate openly with us and let us know if you have concerns.
- Be involved in planning for your family member.

Some programs may have additional expectations, like specific staff qualifications or levels of parental involvement.

## Problem Solving and Complaints

We work to prevent and manage concerns or problems as they happen. We believe good communication is the best way to solve problems. Our staff are trained to handle concerns respectfully and effectively, and we work hard to stay connected with families, caregivers, and the people we support.

If you have a complaint, we want to hear about it. We'll do our best to resolve the issue quickly and make sure you're getting the support you need.

Your privacy is protected, and making a complaint will not affect your access to safe services.

### Who Can Make a Complaint?

- Anyone using our services
- A family member or representative
- Anyone concerned about the services we offer

If you would like help filing a complaint you can ask a family member, staff member, or anyone you feel comfortable with to help you. We can also support you to find someone to help. A person assisting you in this type of situation is called an advocate.

## How to Submit a Complaint

We encourage you to speak up as soon as a concern comes up. It's best to try to resolve things directly with the people involved.

We'll go over our complaint policies with you during your orientation, and you can ask for a copy anytime.

If you have a concern, please talk to your Program Manager. If it's not resolved, you can find more information about our complaint process at [www.aspirerichmond.com](http://www.aspirerichmond.com) in the Feedback section. You'll also find links to the complaint processes for our funding agencies and the Richmond School District.



[Aspire  
Richmond  
Feedback Page](#)

# Resources

---

We know your role can sometimes feel overwhelming. Your Program Manager is a valuable Resource if you have any questions.

## Aspire Family Resource

The Aspire Family Resource Manager is available to support you as you navigate everyday challenges and explore available services. Here's how the Family Resource Manager can help:

- Share information about local and provincial services and supports
- Assist with transitions, like starting kindergarten, moving from child to adult services, or when an adult child leaves home
- Help you connect with other families and support networks
- Provide advocacy when needed
- Offer books, articles, and other helpful resources

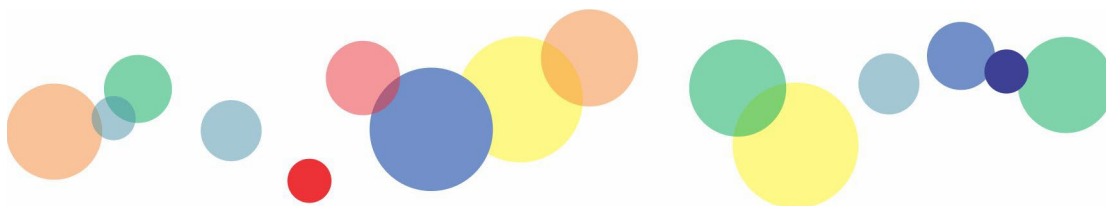
If we're not able to provide the support your family member needs, we'll work with you to explore other options and refer you to other community organizations that may be able to help.

## Other Helpful Resources

There are many other services available to support you and your family. Here's a short list of some key organizations:

- [Ministry of Children and Family Development \(MCFD\)](#)  
Provides funding and decides eligibility for children's programs like Infant Development and Supported Child Development. Also offers childcare subsidies and support for childcare spaces.
- [Community Living British Columbia \(CLBC\)](#)  
Supports adults with disabilities through programs like LIFE Services, Respite, Supported Living, and Home Share. CLBC also offers planning support through its Richmond office.
- [Ministry of Social Development and Poverty Reduction](#)  
Offers income assistance and BC Disability Benefits for people 18 and older. Benefits may include monthly financial support, medical and dental coverage, and bus passes.

- **TransLink HandyDART**  
A door-to-door transit service for people who use wheelchairs, scooters, or need help using public transit.
- **Advocate for Service Quality**  
Helps individuals and families who are unhappy with services provided by the provincial government or funded agencies.
- **Representative for Children and Youth**  
Supports young people (up to age 24) by making sure their voices are heard and their rights are respected during important decisions.
- **Office of the Public Guardian and Trustee of BC**  
Offers guidance on guardianship, health care consent, and Representation Agreements for adults who can't make decisions on their own.
- **Nidus Personal Planning Resource Centre**  
A non-profit that provides information about personal planning, including Representation Agreements.
- **Family Support Institute (FSI)**  
A province-wide organization led by families, offering support, training, and networking for families who have a member with a disability.



# The Supported Child Development Program

---

## What is the Supported Child Development Program?

Supported Child Development (SCDP) is a community-based, early intervention program. The Program is funded by the Ministry of Children and Family Development and supports families of children who need extra help to take part in inclusive, licensed, community child care programs. We work with families to help find child care options that fit their child's needs and their family's situation.

Early intervention means giving children extra support early in life, as soon as we know they may have a developmental delay or disability. We believe early support helps:

- Children grow and learn
- Families feel supported and informed

Early intervention is about:

- Learning about your child's needs as early as possible
- Helping you understand those needs
- Working together to make a plan for your child and your family

The goal is to support your child's development and your family's well-being.

### **Families Are Central**

We believe families know their children best. Families provide important information about your child, and the love, support, and encouragement they need.

Early intervention works best when:

- Your values and preferences are respected
- Your knowledge is shared
- We work together as a team

This team may include:

- SCDP staff
- Therapists
- Child care providers and teachers
- Community members
- Other family members

## How We Support You and Your Child

The Richmond Supported Child Development Program (SCDP) works with families and professionals to help children with developmental delays, disabilities, or extra support needs take part in community child care. The SCDP has been supporting families in Richmond since 1995. We help by:

- Creating an individual plan for your child that respects your family, culture, and values
- Providing training and resources for you and your child care provider
- Supporting inclusion so children can learn and play with others
- Helping you find information and services, including choosing child care
- Providing funding so child care programs can hire extra staff when needed
- Working with child care providers to develop strategies and supports for your child

We work with many types of child care, including:

- Licensed group child care
- Family child care
- Preschool
- Out-of-school care
- In-home child care
- Youth programs
- License-Not-Required (LNR) child care

## Access to SCDP Services

There is no cost to families for Supported Child Development services. However, families are responsible for any space fees that are required by child care programs.

To apply, families complete an online self-referral form available on the Aspire Richmond website or by scanning this QR code. Families can also be referred by another professional.

The SCD Program is responsible for deciding if a family is eligible for services. To be eligible, the need for support must be confirmed with



[SCDP Online  
Self-Referral  
Form](#)

written documentation from a qualified professional. This may include a letter or report from:

- A doctor or specialist
- A psychologist or diagnostic clinic
- An Infant Development Consultant
- A Speech-Language Pathologist
- A Community Health Nurse
- A Physiotherapist
- Another related professional

This documentation helps us understand your child's needs in a child care setting. The program reviews all information and makes the final decision about eligibility.

An SCDP Consultant completes the intake process. They will

- Talk with the family
- Learn about the child's strengths and needs
- Look at the child care setting
- Work with child care staff, when appropriate

Together, the level of support is determined that is inclusive, responsive, and strength based. Families are involved at every step.

SCDP supports:

- Parents or legal guardians who need child care in Richmond
- Children from birth to 12 years of age
- Children with a developmental delay or disability who need extra support to attend a licensed child care program, such as:
  - Daycare
  - Preschool
  - Out-of-school care
- Support for Older Children and Youth up to 19 years of age. Availability depends on individual needs and program guidelines.

## Waitlist Management

Supported Child Development Programs often have long waitlists. This can include waiting for intake appointments, Consultant support, and extra staffing funding.

To manage waitlists fairly, we use a tool called the Waiting List Priority Tool (WLPT). The tool was developed with other Supported Child Development programs in the region and helps us:

- Decide who is seen first
- Be fair and transparent
- Use funding to support as many families as possible

We also follow funding guidelines to make sure resources are shared responsibly.

## Determining Priority for Services

Priority is based on:

- Provincial Supported Child Development policies
- Ministry of Children and Family Development requirements
- Community needs and priorities
- Available program resources

Supported Child Development consultants and program managers review each referral together. The following factors are considered:

- Date of referral - How long your child has been on the waitlist
- Child's age - Extra priority may be given to children in their final year before Kindergarten, especially if they have not received child care or supports before
- Child's needs - Based on the Support Guide, created with families and child care staff
- Family needs - Including family circumstances and available supports. Preschool-aged children in the two years before Kindergarten may receive increased priority
- Child care setting needs – including:
  - Level of support required
  - Group size and dynamics
  - Staff experience and training
  - Supports already in place

Priority is assigned based on the results of the WLPT. Each child's place on the waitlist is reviewed whenever funding becomes available. This helps make sure services are offered as fairly as possible.

## Types of Services

**Consultation Only** - Some children and child care programs receive consultation support only. This includes:

- Regular visits from an SCD consultant
- Guidance and coaching
- Practical strategies
- Helpful resources
- Training for child care staff

Consultation support helps child care programs use inclusive practices so all children can take part.

**Extra Staffing Support** – In addition to consultation, some children need extra staffing support in order to participate in a child care program with their peers. Extra Staffing Support can be available for children who:

- Have a developmental delay or disability in at least one area of development:
  - Physical
  - Cognitive
  - Communication
  - Social/Emotional/Behavioural
- Are under 19 years of age

Extra staffing support:

- Improves child-to-staff ratios
- Helps keep the environment safe
- Supports inclusion and participation
- Helps staff respond to the child's needs

This support helps create a safe, welcoming, and inclusive child care environment where children can succeed.

**In-Home Child Care** (in special situations) - Sometimes, a child cannot attend a child care program because of medical needs, or their support needs make it difficult to take part in a child care setting. In these situations, in-home child care may be an option if you need child care so you can work or attend school full-time. Funding is discussed with the SCDP Manager and follows the Support Guide, funding guidelines and policies. This helps make sure services are fair and consistent.

If your child receives care in your home:

- A contract is written so that funding is arranged directly with you
- You become the employer of the caregiver

## The SCDP Approach and Philosophy

### Family-Centred Practice

Families are at the heart of the Supported Child Development Program. Parents and caregivers are the most important members of the SCDP team. We work in partnership with families and community providers. Families are involved in all decisions and help set goals for their child.

We respect and value:

- Your strengths
- Your culture
- Your history
- Your rights and responsibilities
- What makes your family unique

### Inclusion

Our services are based on inclusion. Inclusion means that all children, including children with different abilities, have the right to take part in their community.

Children should be included in natural settings. Natural settings are places where children usually spend time, such as:

- Child care centres
- Preschools
- Parks
- Community centres

Some children need extra support to be included. Supporting inclusion means working with families, child care providers, and community professionals to set goals and put supports in place to help reach those goals.

We include you, your child care provider, and your community in planning and providing inclusive child care.

## Shared Responsibility

Supported Child Development is an important community service. Making it work is a shared responsibility between:

- Families
- Child care providers
- Community professionals
- Government

## Child Development

Quality child care helps children grow and learn, stay healthy, and feel safe. High-quality programs provide caring and safe environments that support children to learn alongside other children. Early planning and supports help each child reach their full potential.

Children with developmental needs have access to activities that fit their age and stage and that are inclusive.

## Evidence-Based Practice

Research shows that quality child care leads to positive outcomes for children. It helps us understand what supports work best and how to design strong early intervention programs. We stay up to date with research and use it to guide our work.

## Diversity

Aspire Richmond values diversity. We respect and honour differences in:

- Culture
- Language
- Income
- Family background

We use inclusive and culturally responsive practices. We work with families and community partners to make sure our services:

- Are respectful
- Are flexible
- Meet the needs of our diverse community

## Relationship with Indigenous Communities

We respect and honour the unique rights, histories, and lived experiences of Indigenous peoples. We recognize that Indigenous communities have the right to design and deliver their own services and that services should reflect their cultures, priorities, and self-determination. We serve as an interim program until that time and support the development of capacity within Indigenous communities to provide Supported Child Development.

## SCDP Consultants

SCDP Consultants are licensed Early Childhood Educators with experience supporting children, youth and families.

Our staff have strong knowledge and experience in:

- Child development – understanding how children grow, learn, and communicate
- Inclusive practices – supporting children to participate fully alongside their peers
- Family-centred practice – working in partnership with families and respecting family values, culture, and choices
- Positive Behaviour Support – using supportive, strengths-based strategies to help children succeed

Our team works closely with families, child care providers, and community partners to ensure children receive consistent, respectful, and effective support.

## What to Expect from SCDP

SCDP Consultants provide a wide range of services, both for you and your child, and for child care providers. We do our best to be flexible and adjust our services to meet your needs. Here is what you can expect:

## Intake

Once your child's referral is accepted, we will contact you to set up a meeting. This meeting is called the initial intake. The meeting can take place in your home, at the Aspire SCDP office, or anywhere you feel most comfortable.

The meeting is a time to ask questions, share information about your family and plan next steps together. During the meeting, we will talk with you about:

- Supported Child Development (SCDP) services
- The Support Guide
- Consent forms to share information
- This Family Handbook
- Your child's rights
- Child care options
- Funding guidelines
- The F-Words Plan
- Other community supports that may be helpful
- The Family Orientation Checklist

## The Support Guide

The Support Guide is a document about your child. It describes your child's strengths, development, and the type and level of support your child needs. It helps make sure your child can take part successfully in a community child care setting.

The Support Guide Includes:

- Information about your child
- A list of professionals and agencies working with your family
- Details about the supports your child may need in child care
- If extra staffing support is needed, the guide explains these supports

We create the Support Guide together with you. Sometimes, we also work with your child care provider. We use the Support Guide to help you choose a child care setting. It also helps the child care providers understand how to support your child.

The Support Guide is reviewed and updated once a year. Updates are done with you and the child care program your child attends.

## F-Words Framework for Child Development

The F-Words Framework helps us take a whole-person, strengths-based approach to planning. The F-Words Framework was developed in 2011 by Dr. Peter Rosenbaum and Dr. Jan Willem Gorter at CanChild. It is based on the World Health Organization's International Classification of Functioning, Disability, and Health (ICF).

The F-Words focus on what matters most to a child's development, well-being, and quality of life:

- Function – what a child does in daily life, this includes play, learning, and daily activities
- Family – the people who love and support the child; families know their child best
- Friends – relationships and social connections; spending time with others and feeling included
- Fitness – physical and mental health; feeling well and being active in ways that work for the child
- Fun – enjoyment and interests; things the child enjoys
- Future – hopes, goals, and possibilities; thinking about what is important now and later

The goal of the F-Words Framework is to support active participation in everyday life. This means we focus on:

- Strengths, not just needs
- What is important to children and families
- Taking part in everyday life
- Inclusion at home, in child care, and in the community

Using the F-Words helps us work in partnership with families and support children in ways that are respectful, positive, and person-centred.

## Family and Home Visits

You choose where you meet with your consultant. The meetings can take place in your home, at the Aspire SCDP office, at your child care setting, or anywhere you feel most comfortable.

Family visits help our consultants:

- Learn about your child's development

- Understand your child's interests
- Get to know your child's strengths and unique qualities

Visits are also a time for you to ask questions and get information and support. This may include parent support groups, workshops, and ideas for working with your child care provider.

Family visits are also used to complete paperwork such as consent forms and prepare for upcoming planning meetings.

We try to be flexible with meeting times to fit your family's schedule. Our goal is to make meetings comfortable, helpful, and convenient for you.

## Child Care Setting Visits and Support

Your SCDP consultant visits your child's child care setting as needed. How often visits happen depends on the level of support listed in the Support Guide and the F-Words plan.

Deciding how often visits are needed is a shared responsibility between you, the child care program and the SCDP consultant.

During these child care setting visits, the consultant may:

- Observe your child
- Spend time interacting with your child
- Talk with child care staff
- Share ideas and strategies
- Coach staff on inclusive practices
- Provide resources
- Offer training and support
- Let staff know about upcoming workshops

If your child receives ongoing extra staffing support, the consultant will also spend time with the staff team supporting your child.

After each visit, the consultant writes a visit note and may leave a copy at the child care setting. A follow up email is also sent that includes brief observations, suggestions and strategies, and the recommended next steps. This helps everyone stay informed and work together to support your child.

## Lending Library

SCDP has a lending library that families and child care providers can use. You or the child care setting can borrow:

- Toys
- Specialized equipment
- Children's books
- Learning and play resources
- Materials on
  - Early childhood development
  - Parenting
  - Disabilities
  - Play ideas

Many of these resources can be hard to find elsewhere. Please talk to your consultant if you would like to borrow any of these resources or have ideas for additional resources.

We regularly update the lending library through donations and grants.

## Education and Workshops

Learning together is an important part of making inclusion work. We encourage families and child care providers to take part in training and learning opportunities. We offer a variety of workshops throughout the year. Workshops may be:

- Led by Supported Child Development staff
- Led by visiting specialists
- Led by community professionals

Workshops are open to families, friends, professionals, and child care providers. Your consultant will keep you informed of upcoming workshops. The Aspire Richmond website is also updated with events.

## Transition Planning

Transitions are times of change for children and families. During transitions new people may become involved and familiar people or services may change or end. These changes can feel exciting and challenging at the same time.

If you choose, a SCDP consultant can help you plan, coordinate and feel prepared for these transitions.

Common Transitions may include:

- Moving from Infant Development to Supported Child Development
- Moving from home care or an infant/toddler program to a 3–5-year-old program
- Moving to a new community
- Starting kindergarten
- Moving from a school-age program to a youth program
- Preparing for the move from youth services to adult services

Your consultant will meet with you before a transition to help you prepare by answering any questions and planning the next steps. After the transition, your consultant will follow up with you to make sure your questions or concerns have been addressed.

Our goal is to help make transitions as smooth and supportive as possible for your child and family.

## Coordination with Other Services

The SCD Program works with many community agencies to support children and families. With your consent, we may share important and relevant information with these agencies.

Working with community partners may include:

- Making referrals to other services
- Working together to support your child and family
- Inviting partners to meetings and planning
- Creating more formal partnerships when needed

Sharing information helps services work together, avoid duplication, and better meet your child and family's needs. We only share information with your permission, and only what is needed to support you and your child.

Service Coordination may include working with:

- Community Health Nurse
- Physicians
- Physiotherapists
- Speech Therapists
- Occupational Therapists
- Audiologists
- MCFD CYSN- Social Workers
- Childcare Resource and Referral Centre
- PACE
- Child Care Facilities Licensing Officers
- Mental Health
- Richmond School Board
- City Of Richmond Diversity Services
- FASD Key Worker

- Infant Development Program Consultants
- Nursing Support
- Behavioural Interventionists
- Touchstone Family Services
- BC Centre for Ability
- Other Supported Child Development Services

## The Role of the Parent

Early intervention programs, like Supported Child Development, work best when families are involved. You play an important role in planning and supporting your child. Being involved helps make sure your child gets the supports they need.

You can support your child by:

- Taking part in planning and review meetings. You are welcome to bring a family member or friend for support
- Registering your child for child care and paying child care fees\*
- Being an active parent at your child’s child care setting. This may include:
  - Joining special days or events
  - Going on field trips
  - Staying in regular contact with staff
- Taking part in workshops and learning opportunities. These may be offered by:
  - Aspire
  - Other community organizations
  - Parent or advocacy groups
- Letting us or your child care provider know if you have questions or concerns. It is best to talk about concerns early. We are here to help find solutions
- Keeping in touch with your consultant about any changes that may affect child care
- Completing the annual survey to share your feedback about the program

\* If you need help paying for child care, support may be available. You can contact:



[Richmond Child Care Resource & Referral](#)



[Affordable Child Care Benefit \(Province of British Columbia\)](#)

## Transportation

Families are responsible for arranging transportation for their child to and from the child care program they choose. SCDP consultants do not transport children or family members. If you need help or have questions about arranging transportation for your child, please talk with your SCDP consultant. We are happy to talk with you about possible options or community resources.

## Your Child's Record

Once your application to Supported Child Development is accepted, we create a record for your child. This includes:

- A paper file
- An electronic file in a secure system called ShareVision

These files are where we keep all correspondence, reports, visit records, forms and other documentation related to your child. With your permission, we may also include your child's Individual Education Plan (IEP) from school. This helps support continuity between school, child care, and after-school programs.

Your child's record is shared only with staff who need the information to support your child. With your written permission, we can also share the record with other professionals involved with your child. You can ask to see your child's record at any time by contacting the Program Manager. If you notice something that is not correct, please let us know and we will fix it.

### **Keeping Records Accurate and Secure**

We work hard to keep your child's record complete and up to date. We ask families to share any new reports or assessments they receive so we can add them to the file.

All information about your child is kept private and confidential.

- Paper files are stored in locked cabinets.
- Electronic files are protected with passwords and security settings.
- Only approved staff can access these files.

We continue to protect your child’s information even after your child leaves Aspire. When your child leaves Aspire, their records are stored safely according to government rules. Records are kept for:

- at least 7 years after your child becomes an adult, or
- longer if your child continues with Aspire in another program

## Communication and Staying Connected

Finding child care can be complicated, especially when your child needs extra support. Choosing the right child care may feel overwhelming and hard to navigate. You are not alone. We are here to help.

Good communication helps create the best experience for your child. Clear and open communication between you, your consultant, your child care provider, and other professionals helps everyone work together to support your child.

We help families stay informed and involved in several ways. In addition to regular check-ins, we meet once a year to review and update your child’s information and make changes as needed to support and plans.

We may also share information through:

- Aspire Richmond’s website
- The Aspire Facebook page
- Email
- Newsletters and other mail-outs



[www.aspirerichmond.com](http://www.aspirerichmond.com)

## Leaving Supported Child Development

SCDP consultants support families with planning, coordination, and transitions. There are times when your family may no longer need services from Supported Child Development. This may happen when:

- You decide that SCDP services are no longer needed
- Your child starts Kindergarten and will not attend an Out of School Care program
- Your child no longer needs extra support
- Your family moves to a new community
- Your child turns 19 years old

Your consultant will work with you to make these transitions as smooth as possible.

### **Preparing for the Transition to Kindergarten**

Your SCDP consultant will help your family prepare for Kindergarten in many ways. This may include:

- Sending you a letter asking you to choose a Kindergarten Facilitator
- Inviting you to the Kindergarten Parent Panel Presentation
- Talking with you about supports available for the Kindergarten transition
- Giving you a copy of the “Helpful Hints” booklet about starting elementary school
- Meeting with you to update your child’s Support Guide
- Attending the “meet and greet” meeting with the school principal with you
- Attending school transition meetings, with your permission
- Inviting Out of School Care staff to meetings, if appropriate

Your consultant may also support your child by:

- Arranging visits to the Kindergarten classroom
- Creating social stories or visuals
- Supporting continuity between child care and Kindergarten

### **Moving to Another Community**

If your family moves to another community, we can help with the transition. With your permission, your consultant will complete a SCDP Regional Transfer Form and share any applicable documentation with your new community. This helps ensure services continue smoothly in your new location.

### **Leaving SCDP**

When your child is ready to leave SCDP, we will prepare an exit summary. The exit summary:

- Describes your child’s experience with SCDP
- Summarizes progress and supports

You can keep this report for your records

### **Transition to Adult Services**

We can also support planning for the transition to adulthood, starting around age 17 or 18. This may include working with your family and coordinating with the Ministry of

Children and Family Development (MCFD) social worker. Our goal is a gradual and smooth transition to adult services.

### **Staying in Touch**

After your child leaves SCDP, you may be contacted to complete a short survey. This helps us learn about your experience with SCDP and improve our services.

We also welcome you to stay in touch. You are always welcome to contact us or drop by to let us know how your family is doing.

# NOTES

---







Aspire Richmond

#170 7000 Minoru Blvd, Richmond BC, V6Y 3Z5

604-279-7040

[www.aspirerichmond.com](http://www.aspirerichmond.com)

[info@aspirerichmond.com](mailto:info@aspirerichmond.com)